

Day of the Dead Knowledge Organiser

Year 8 Art Term 1 Autumn 1

Day of the Dead or “Dia de los Muertos” is a Mexican festival that celebrates and remembers loved ones that have died and the love their family had for them. In the celebrations they decorate their homes with sugar skulls, flowers, marigolds, candles, hearts, bright colours, because it is a happy event.

Formal Elements:

A **pattern** is a design in which lines, shapes, forms or colours are repeated. The part that is repeated is called a motif

Texture – is how something feels or looks like it feels

Form - describes a piece of work that is 3D.

Bronze

To be able to record images relating to Day of The Dead
To complete home learning research
To be able to use colour successfully

Silver

To accurately record images related to Day of the Dead
To be able to use symbols and shapes to create own day of Dead image

Gold

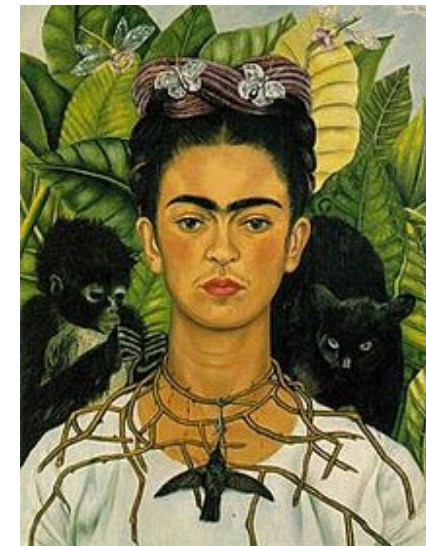
To successfully make an image that has been inspired by artists and artefacts from day of the Dead
To be able to refine and improve your work.



AO1: Developing ideas through artist research
AO2: Experimenting with materials
AO3: Recording ideas through drawing and photos
AO4: Making a personal response

Artists that we look at:

Frida Kahlo
Heather Galler
Sara Blake



Day of the Dead Knowledge Organiser

Year 8 Art Term 1 Autumn 1

Day of the Dead or “Dia de los Muertos” is a Mexican festival that celebrates and remembers loved ones that have died and the love their family had for them. In the celebrations they decorate their homes with sugar skulls, flowers, marigolds, candles, hearts, bright colours, because it is a happy event.

Formal Elements:

A **pattern** is a design in which lines, shapes, forms or colours are repeated. The part that is repeated is called a motif

Texture – is how something feels or looks like it feels

Form - describes a piece of work that is 3D.

Bronze

To be able to record images relating to Day of The Dead
To complete home learning research
To be able to use colour successfully

Silver

To accurately record images related to Day of the Dead
To be able to use symbols and shapes to create own day of Dead image

Gold

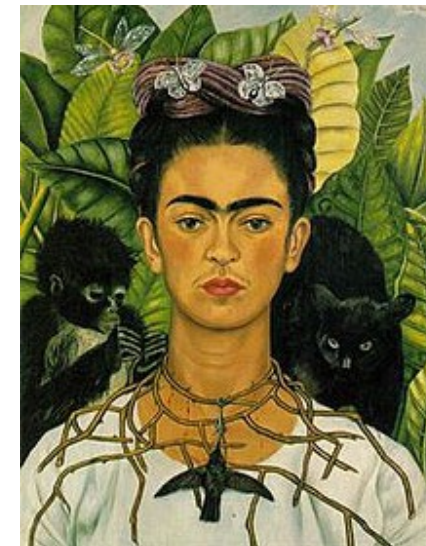
To successfully make an image that has been inspired by artists and artefacts from day of the Dead
To be able to refine and improve your work.



AO1: Developing ideas through artist research
AO2: Experimenting with materials
AO3: Recording ideas through drawing and photos
AO4: Making a personal response

Artists that we look at:

Frida Kahlo
Heather Galler
Sara Blake



Iznik Tiles Knowledge Organiser

Year 8 Art Term 1 Autumn 1

Iznik art is colourful pottery and ceramic tiles produced during the 16th and 17th centuries in **Iznik**, a town in north-western Turkey.

Formal Elements:

A **pattern** is a design in which lines, shapes, forms or colours are repeated. The part that is repeated is called a motif

Texture – is how something feels or looks like it feels

Form - describes a piece of work that is 3D.

Line - A **line** is a mark made on a surface that joins different points

Bronze

I can record images related Iznik art and natural forms

I try to use symbols and shapes to create my own Iznik inspired artwork

Silver

To accurately record images related Iznik art and natural forms

I can successfully use symbols and shapes to create own Iznik inspired artwork

Gold

To successfully make an image that has been inspired by artists and artefacts from Iznik art

I am able to refine and improve my work.

There is clear development in my ideas.

AO1: Developing ideas through artist research

AO2: Experimenting with materials

AO3: Recording ideas through drawing and photos

AO4: Making a personal response

Artist work that we look at:
Iznik tiles



Perspective Knowledge Organiser

Year 8 Art Term 1 Autumn 2

Perspective is the appearance of objects, buildings, etc, relative to each other, as determined by their distance from the viewer, or the effects of this distance on their appearance

Formal Elements:

A **pattern** is a design in which lines, shapes, forms or colours are repeated. The part that is repeated is called a motif

Line - A **line** is a mark made on a surface that joins different points

Space - **Space** in a work of **art** refers to a feeling of depth or three dimensions

Bronze

I can draw an image using one point perspective.

I am aware of the work of other artists who use perspective in their work.

Silver

I can make a detailed response to the work of others showing understanding of the techniques used.

Gold

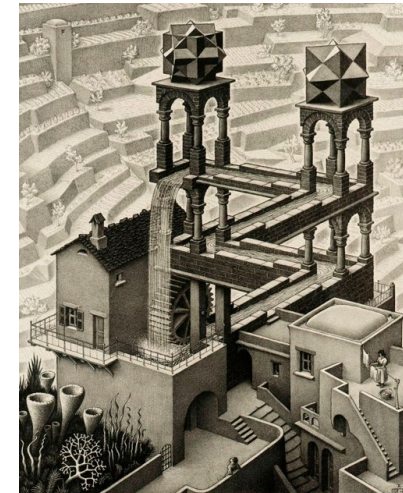
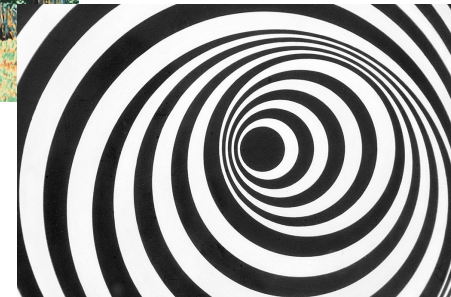
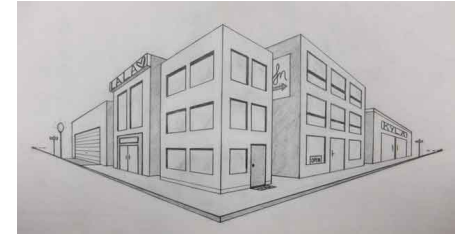
My work has clearly been inspired by the work of others and I can refine my work to show further improvements. There is clear development in my ideas

AO1: Developing ideas through artist research

AO2: Experimenting with materials

AO3: Recording ideas through drawing and photos

AO4: Making a personal response



Artists that we look at:
Magritte
Escher
Bridget Riley

Portraits Knowledge Organiser

Year 8 Art Term 2- Spring 1

Portraits are drawings, paintings or photographs of a particular person.

You will learn about different types of portraits, including photorealism and proportions, as well as cartoons.

Formal Elements:

Tone – is the lightness or darkness of something

Line - A **line** is a mark made on a surface that joins different points

Value defines how light or dark a given color or hue can be

Bronze

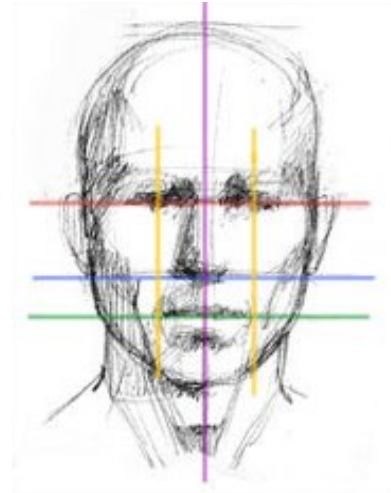
I can use a grid method to record my facial features

I can use tone to show areas of light and dark

Silver

I can show an understanding of the work of others

I can record accurately from my observations



Gold

My work has clearly been inspired by the work of others and I can refine my work to show further improvements.

There is clear development in my ideas

AO1: Developing ideas through artist research

AO2: Experimenting with materials

AO3: Recording ideas through drawing and photos

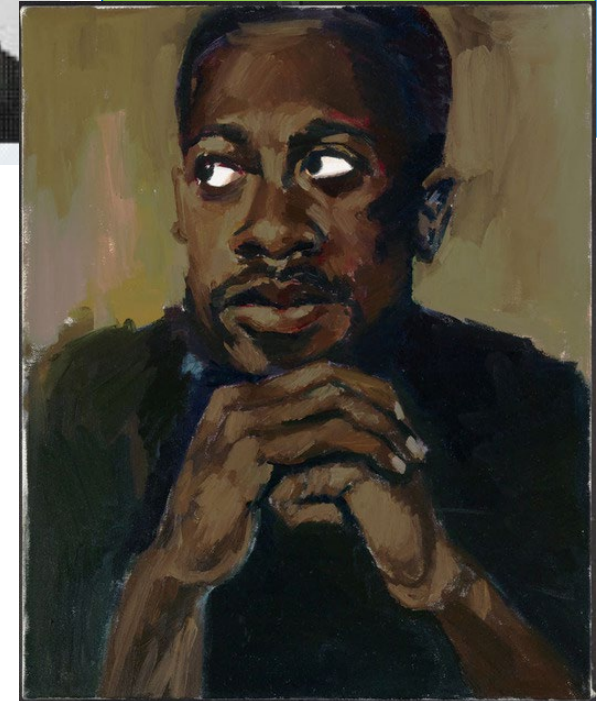
AO4: Making a personal response



Artists that we look at:

Chuck Close

Lynette Yiadom-Boakye



Portraits Knowledge Organiser

Manga and Illustration

Portraits are drawings, paintings or photographs of a particular person.

You will learn about different types of portraits, including Manga and illustration

Formal Elements:

Tone – is the lightness or darkness of something

Line - A **line** is a mark made on a surface that joins different points

Value defines how light or dark a given color or hue can be

Bronze

I can use a grid method to record my facial features

I can use tone to show areas of light and dark

Silver

I can show an understanding of the work of others

I can record accurately from my observations

Gold

My work has clearly been inspired by the work of others and I can refine my work to show further improvements. There is clear development in my ideas



Year 8 Art Term 2- Spring 2

AO1: Developing ideas through artist research

AO2: Experimenting with materials

AO3: Recording ideas through drawing and photos

AO4: Making a personal response

Artists that we look at:
Takehiko Inoue -
Vagabond



Collage Knowledge Organiser

Year 8 Art Term 3- Summer 1

Collage- the technique and the resulting work of art in which pieces of paper, photographs, fabric and other objects are arranged and stuck down onto a supporting surface

Formal Elements:

Line - A **line** is a mark made on a surface that joins different points

Form - describes a piece of work that is 3D

Colour – primary, secondary, tertiary, hot and cool

Bronze

I can use a range of methods to create a collage

I can explain what my choices of collaged materials

Silver

I can show an understanding of the work of others

I can accurately record with collage from my observations

Gold

My work has clearly been inspired by the work of others and I can refine my work to show further improvements. There is clear development in my ideas.

AO1: Developing ideas through artist research

AO2: Experimenting with materials

AO3: Recording ideas through drawing and photos

AO4: Making a personal response

Artists that we look at:

Hannah Hoch

Dolan Geiman

Kurt Schwitters



Knowledge Organiser

Year 8 Art Term 2- Summer 2

Graffiti Art

Is Graffiti art?

Graffiti art as a term refers to images or text painted usually onto buildings, typically using spray paint

Formal Elements:

Tone – is the lightness or darkness of something

Line - A **line** is a mark made on a surface that joins different points

Colour – primary, secondary, tertiary, hot and cool

Bronze

I can explore ways of creating a graffiti alphabet. I can show an understanding of Graffiti artworks

Silver

In my work I can show the influence of others and I can use techniques that have been taught. I can make refinements to my work to improve it

Gold

My work has clearly been inspired by the work of others and I have been able to create a personal and meaningful outcome. I have experimented with different ideas.

AO1: Developing ideas through artist research

AO2: Experimenting with materials

AO3: Recording ideas through drawing and photos

AO4: Making a personal response

Artists that we look at:

Banksy

Shepard Fairey

